

Note: All text underlined in blue are hyperlinks to external resources

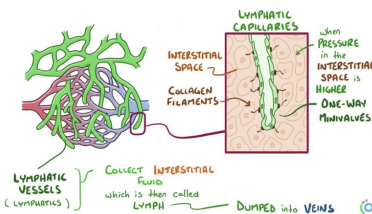


Key learning outcomes:

- Describe the key components of the lymphatic system
- Describe the difference between types of immune cells
- Explain the key processes that occur in innate and adaptive immunity

ANATOMY

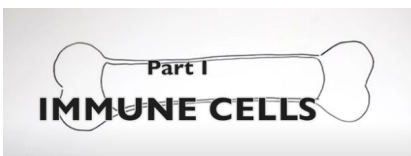
Although the immune system has mainly microanatomy and physiology components, the lymphatic system is closely linked so here are a few videos introducing it! It can be very easy to neglect this aspect and it is not given as much attention so it is a great opportunity to get a headstart on finding more about it!



- Osmosis- 11m ([WATCH](#))
- Crash course - 9m ([WATCH](#))
- Khan Academy - 10m [video](#) explains why we need the system and you can understand more about what role it plays in the immune system [here](#)

MICROANATOMY

It's important to be able to differentiate between the types of immune cells under the microscope and know their functions. This will be great preparation for microanatomy practicals you will have in your [first term!](#)



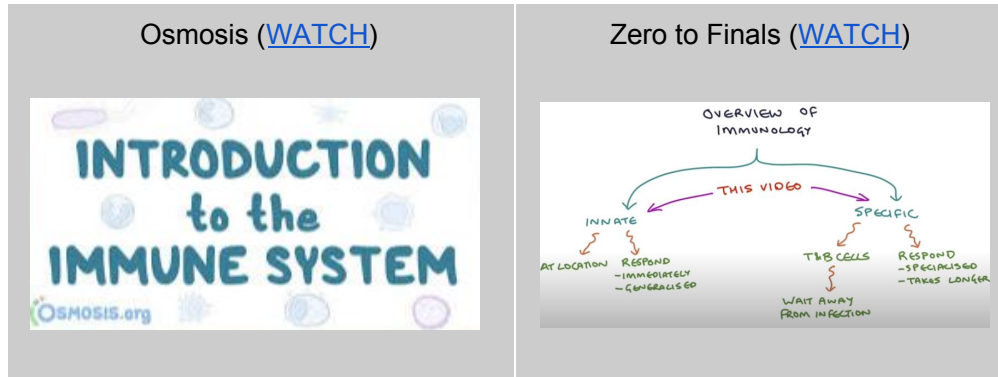
This [video](#) is a great introduction to the cells you don't necessarily need to know the names of all the precursor cells, apart from monocytes, but it's great to have an insight into where immune cells come from! [Here](#) is another handwritten tutorial as well!

This [page](#) gives a great overview of the five key types of white blood cells, which are also known as leukocytes! See if you can identify them with the microscope [slides](#) as well!

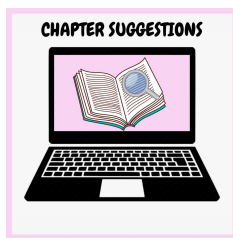
PHYSIOLOGY

The Physiology of the Immune System can be slightly overwhelming at first, especially if this is your first time studying it (as not all A level exam boards cover much immunology). However, do not worry!

You will have great teaching throughout the year so use this opportunity to either revise or begin to appreciate the basics of the system so that you will be in a great position to build on it in PCS. Start off by watching either (or both!) of these overview videos - they are 15m:



Now that you have an overview, watch the following videos will hone in on [innate](#) and [adaptive](#) immunity specifically to provide more insight! For further explanations, here is a [Khan Academy playlist](#) which goes into more detail about the roles of each cell, or there are also Crash course videos - check out parts [1](#), [2](#) & [3](#) .



If you like to read instead, these online chapters give an overview of the content discussed in the videos:

- Open Text Book – Anatomy of The Lymphatic and Immune Systems ([READ](#))
- Lumen Learning provide great explanations on [innate](#) and [adaptive](#) immune systems

To finish off, try these quizzes to see what you have learnt!

- Anatomy of lymphatic system ([GO](#))
- Scroll down to the 'Immune System and Other Body Defenses' section and give some of their quizzes a go ([GO](#))



Hope you have found this resource useful! Once you have completed this, please give some short feedback - it will take 10 seconds to fill in! This will help me to get your opinions and check engagement! ([GIVE FEEDBACK](#))